

45 $\frac{3}{8}$

44 $\frac{1}{16}$

12

36

KL40K6T12V4

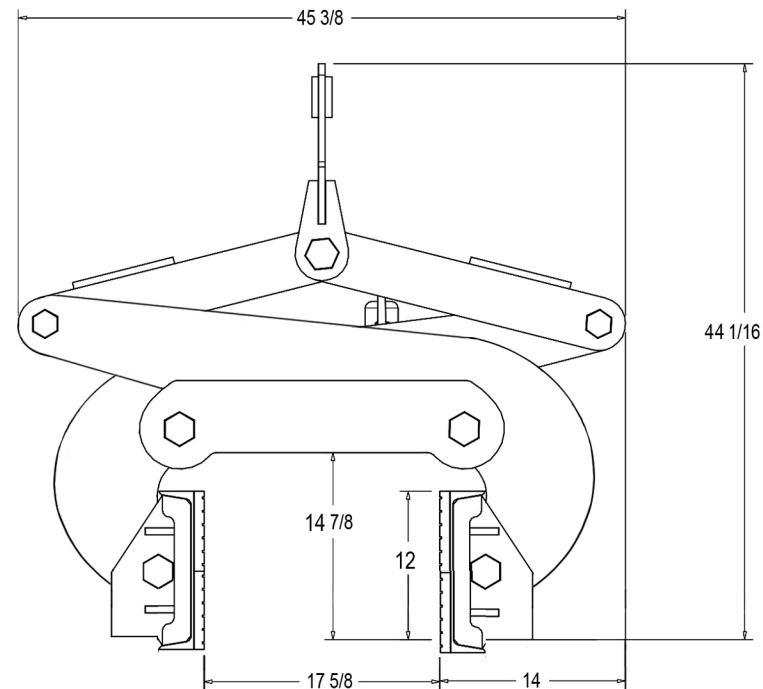
6" TO 12" GRIP RANGE

40,000 POUND MAXIMUM CAPACITY

UNIT WEIGHT - 1840 POUNDS

AUTOMATIC LATCHING MECHANISM: ACTUATOR, XL

ELASTOMER PADS: (4) 6 X 36



DRAWN BY:

N/A

DATE:

N/A



KENCO CORP.
170 STATE ROUTE 271
LIGONIER PA 15658

(800)653-6069

WWW.KENCO.COM

THE INFORMATION PROVIDED WITHIN THIS
DRAWING IS THE PROPERTY OF KENCO CORP. ANY
REPRODUCTION, TRANSMITTAL, OR USAGE OF ANY
KIND IS PROHIBITED WITHOUT WRITTEN PERMISSION.

WEIGHT

1840 lbs

CAPACITY

40000 lbs

DESCRIPTION

KL40K6T12V4
KENCO BARRIER LIFT
40,000 POUND CAPACITY
GENERAL DIMENSIONS

PART NO.

N/A

REVISION